



India Meteorological Department  
Earth System Science Organisation  
(Ministry of Earth Sciences)

**BULLETIN NO.: 15 (BAY OF BENGAL 01/2020)**

**TIME OF ISSUE: 0145 HOURS IST**

**DATED: 18.05.2020**

**FROM: INDIA METEOROLOGICAL DEPARTMENT (FAX NO. 24643965/24699216/24623220)**

**TO: CONTROL ROOM, NDM, MINISTRY OF HOME AFFAIRS (FAX.NO. 23093750)**

**CONTROL ROOM NDMA (FAX.NO. 26701729)**

**CABINET SECRETARIAT (FAX.NO.23012284, 23018638)**

**PS TO HON'BLE MINISTER FOR S & T AND EARTH SCIENCES (FAX NO.23316745)**

**SECRETARY, MOES, (FAX NO. 24629777)**

**H.Q. (INTEGRATED DEFENCE STAFF AND CDS) (FAX NO. 23005137/23005147)**

**DIRECTOR GENERAL, DOORDARSHAN (23385843)**

**DIRECTOR GENERAL, AIR (23421105, 23421219)**

**PIB MOES (FAX NO. 23389042)**

**UNI (FAX NO. 23355841)**

**D.G. NATIONAL DISASTER RESPONSE FORCE (NDRF) (FAX NO. 26105912, 2436 3260)**

**DIRECTOR, PUNCTUALITY, INDIAN RAILWAYS (FAX NO. 23388503)**

**CHIEF SECRETARY, ANDAMAN & NICOBAR ISLANDS (FAX NO. 03192- 232656)**

**CHIEF SECRETARY, WEST BENGAL (FAX NO. 033-22144328)**

**CHIEF SECRETARY, GOVT. OF ODISHA (FAX NO. 0674 -2536660)**

**CHIEF SECRETARY, ANDHRA PRADESH (FAX NO. 0863-2441029, 08645-246600)**

**CHIEF SECRETARY, TAMIL NADU (FAX NO. 044-25672304)**

**CHIEF SECRETARY, PUDUCHERRY (FAX NO. 0413-2337575, 2334145)**

**Sub: Very Severe Cyclonic Storm 'AMPHAN' (pronounced as UM-PUN) over central parts of South Bay of Bengal and adjoining central Bay of Bengal: Cyclone Alert for West Bengal and north Odisha coasts: Yellow Message.**

The **Very Severe Cyclonic Storm 'AMPHAN'** (pronounced as **UM-PUN**) over central parts of South Bay of Bengal moved north-northeastwards with a speed of 11 kmph during past 06 hours and lay centred at 2330 hrs IST of today, the 17<sup>th</sup> May, 2020 over **central parts of South Bay of Bengal and adjoining central Bay of Bengal** near latitude 12.5°N and longitude 86.4°E, about 870 km nearly south of Paradip (Odisha), 1020 km south-southwest of Digha (West Bengal) and 1130 km south-southwest of Khepupara (Bangladesh). It is very likely to intensify further into an Extremely Severe Cyclonic Storm during next 06 hours. It is very likely to move nearly northwards during next 06 hours and then re-curve north-northeastwards and move fast across northwest Bay of Bengal and cross West Bengal – Bangladesh coasts between Digha (West Bengal) and Hatiya Islands (Bangladesh) during the Afternoon / Evening of 20<sup>th</sup> May 2020 as a Very Severe Cyclonic Storm.

Forecast track and intensity are given in the following table:

Date/Time(IST)	Position (Lat. °N/ long. °E)	Maximum sustained surface wind speed (Kmph)	Category of cyclonic disturbance
17.05.20/2330	12.5/86.4	145-155 gusting to 170	Very Severe Cyclonic Storm
18.05.20/0530	13.5/86.5	160-170 gusting to 185	Extremely Severe Cyclonic Storm
18.05.20/1130	14.0/86.6	170-180 gusting to 200	Extremely Severe Cyclonic Storm
18.05.20/1730	14.6/86.7	180-190 gusting to 210	Extremely Severe Cyclonic Storm
18.05.20/2330	15.2/86.8	190-200 gusting to 220	Extremely Severe Cyclonic Storm
19.05.20/1130	16.7/87.2	190-200 gusting to 220	Extremely Severe Cyclonic Storm
19.05.20/2330	18.5/87.7	180-190 gusting to 210	Extremely Severe Cyclonic Storm
20.05.20/1130	21.7/88.3	170-180 gusting to 200	Extremely Severe Cyclonic Storm
20.05.20/2330	22.6/88.7	135-145 gusting to 160	Very Severe Cyclonic Storm
21.05.20/1130	23.8/88.9	85-95 gusting to 105	Severe Cyclonic Storm
21.05.20/2330	26.0/89.3	50-60 gusting to 70	Deep Depression

**Spatial rainfall distribution: Isolated: <25%, A few: 26-50%, Many: 51-75%, Most: 76-100%**

**Rainfall amount (mm): Heavy rain: 64.5 – 115.5, Very heavy rain: 115.6 – 204.4, Extremely heavy rain: 204.5 or more.**

## (1) Heavy rainfall Warning:

### Odisha

Coastal Odisha is likely to experience light to moderate rainfall at many places from 18<sup>th</sup> May evening with heavy falls at isolated places over coastal Odisha (Gajapati, Ganjam, Puri, Jagatsinghpur & Kendrapara Districts) on 18<sup>th</sup> May, 2020. Rainfall at most places with heavy to very heavy rainfall at a few places over north coastal Odisha (Jagatsinghpur, Kendrapara, Jajpur, Bhadrak, Balasore & Mayurbhanj Districts) on 19<sup>th</sup> May and isolated heavy rainfall over north Odisha (Bhadrak, Balasore, Mayurbhanj, Jajpur, Kendrapara and Keonjhar Districts) on 20<sup>th</sup> May 2020.

### West Bengal

Coastal districts of Gangetic West Bengal (East Medinipur, South & North 24 Parganas) are likely to experience light to moderate rainfall at many places with heavy falls at isolated places on 19<sup>th</sup> May. Rainfall at most places with heavy to very heavy falls at a few places & extremely heavy falls at isolated places likely over Gangetic West Bengal (east & west Medinipur, south & north 24 Parganas, Howrah, Hoogli, Kolkata and adjoining districts) on 20<sup>th</sup> May.

## (2) Wind warning

### West Bengal & Odisha

- Squally wind speed reaching 45 to 55 kmph gusting to 65 kmph is likely to commence along and off south Odisha coast from 18<sup>th</sup> evening, extend to along & off north Odisha coast from 19<sup>th</sup> morning and along and off West Bengal coast from 19<sup>th</sup> afternoon.
- The wind speed will gradually increase becoming gale wind speed reaching 75 to 85 kmph gusting to 95 kmph from 20<sup>th</sup> morning along and off north Odisha (Jagatsinghpur, Kendrapara, Bhadrak, Balasore and Mayurbhanj districts) and West Bengal (east & west Medinipur, south & north 24 Parganas, Howrah, Hoogli, Kolkata Districts). It will gradually increase thereafter becoming 110 to 120 kmph gusting to 135 kmph along & off the above mentioned districts of North Odisha and 120 to 140 kmph gusting to 155 kmph along & off the above districts of West Bengal from the afternoon of 20<sup>th</sup> May 2020.
- Squally wind speed reaching 55-65 kmph gusting to 75 kmph likely to prevail over Puri, Khordha, Cuttack, Jajpur districts of Odisha during 20<sup>th</sup> May 2020.

### Deep Sea area

- Gale wind speed reaching 125-135 gusting to 150 kmph is prevailing over southeast and adjoining southwest Bay of Bengal. It is likely to increase becoming 140-150 gusting to 165 kmph over southern parts of central Bay of Bengal by 18<sup>th</sup> morning, 170-180 gusting to 200 kmph over northern parts of central Bay of Bengal and adjoining North Bay of Bengal on 19<sup>th</sup>, and 155-165 gusting to 180 kmph over north Bay of Bengal during 20<sup>th</sup> May.

## (3) Sea condition

Sea condition will be Phenomenal over central parts of south Bay of Bengal and adjoining central Bay of Bengal during next 24 hours. It will become Phenomenal over northern parts of central Bay of Bengal and adjoining north Bay of Bengal on 19<sup>th</sup> May and over north Bay of Bengal on 20<sup>th</sup> May 2020.

## (4) Fishermen Warning

- The fishermen are advised not to venture into south Bay of Bengal during next 24 hours, to central Bay of Bengal on 18<sup>th</sup> May and into North Bay of Bengal during 18<sup>th</sup> to 20<sup>th</sup> May 2020.
- Also, fishermen are advised not to venture into North Bay of Bengal along and off North Odisha, West Bengal and adjoining Bangladesh coasts during 18<sup>th</sup> to 20<sup>th</sup> May 2020.

**Spatial rainfall distribution: Isolated: <25%, A few: 26-50%, Many: 51-75%, Most: 76-100%**

**Rainfall amount (mm): Heavy rain: 64.5 – 115.5, Very heavy rain: 115.6 – 204.4, Extremely heavy rain: 204.5 or more.**

### **(5) Storm Surge expected**

- Storm Surge of about 3 meters above Astronomical Tide is likely to inundate low lying areas of south & north 24 Parganas and 2-3 meters over the low lying areas of East Medinipur District of West Bengal during the time of Landfall.

### **(6) Damage Expected and Action suggested**

#### **(a) West Bengal (east Medinipur, south & north 24 Parganas, Howrah, Hoogli, Kolkata districts)**

##### **Damage Expected:**

- Extensive damage to all types of kutcha houses, some damage to old badly managed Pucca structures. Potential threat from flying objects.
- Extensive uprooting of communication and power poles.
- Disruption of rail/road link at several places.
- Extensive damage to standing crops, plantations, orchards.
- Blowing down of Palm and coconut trees.
- Uprooting of large bushy trees.
- Large boats and ships may get torn from their moorings.

##### **Fishermen Warning & Action Suggested:**

- Total suspension of fishing operations during 18th to 20th May 2020.
- Diversion or suspension of rail and road traffic.
- People in affected areas to remain indoors. Mobilise evacuation from Low lying areas.
- Movement in motor boats and small ships not advisable.

#### **(b) Odisha (Jagatsinghpur, Kendrapara, Bhadrak, Balasore, Jajpur & Mayurbhanj)**

##### **Damage Expected:**

- Total destruction of thatched houses/ extensive damage to kutcha houses. Some damage to pucca houses. Potential threat from flying objects.
- Bending/ uprooting of power and communication poles.
- Major damage to Kutcha and Pucca roads. Minor disruption of railways, overhead power lines and signalling systems.
- Widespread damage to standing crops, plantations, orchards, falling of green coconuts and tearing of palm fronds. Blowing down of bushy trees like mango.
- Small boats, country crafts may get detached from moorings.

##### **Fishermen Warning & Action Suggested:**

- Total suspension of fishing operations along & off Odisha coast during 18th to 20th May 2020.
- Judicious regulation of rail and road traffic.
- People in affected areas to remain indoors.
- Movement in motor boats and small ships unsafe.
- Small Fishing Boats may get detached and damaged from their moorings.

Kindly visit [www.rsmcnewdelhi.imd.gov.in](http://www.rsmcnewdelhi.imd.gov.in) and [www.mausam.imd.gov.in](http://www.mausam.imd.gov.in) for updates on the system.

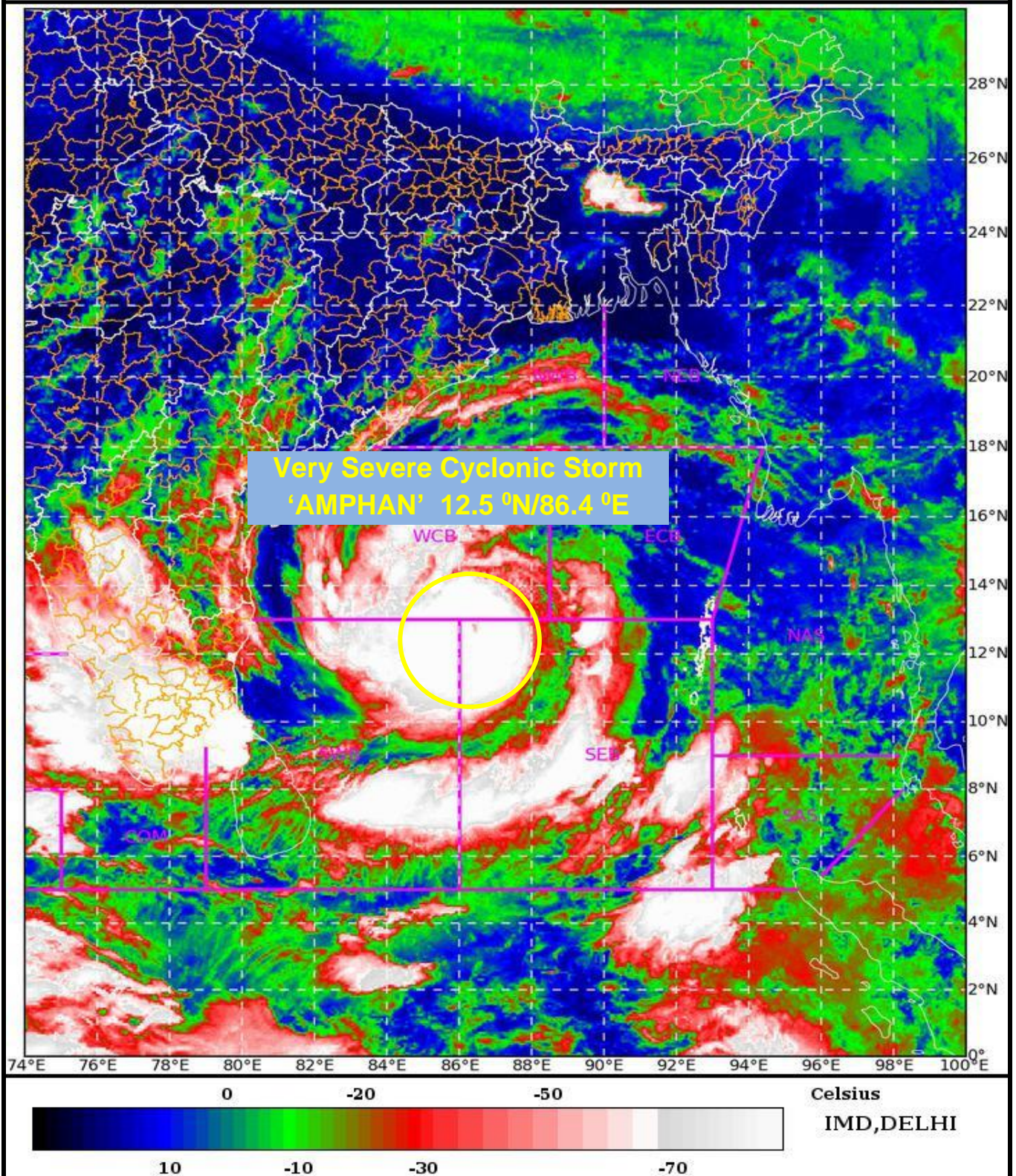
**Next Bulletin will be issued at 0530 hours IST of 18<sup>th</sup> May, 2020.**

**(V. R. Durai)**  
**Scientist-E, RSMC, New Delhi**

**Copy to: CRS, Pune/ ACWC Chennai/ ACWC Kolkata/CWC Bhubaneswar/ /CWC Visakhapatnam**

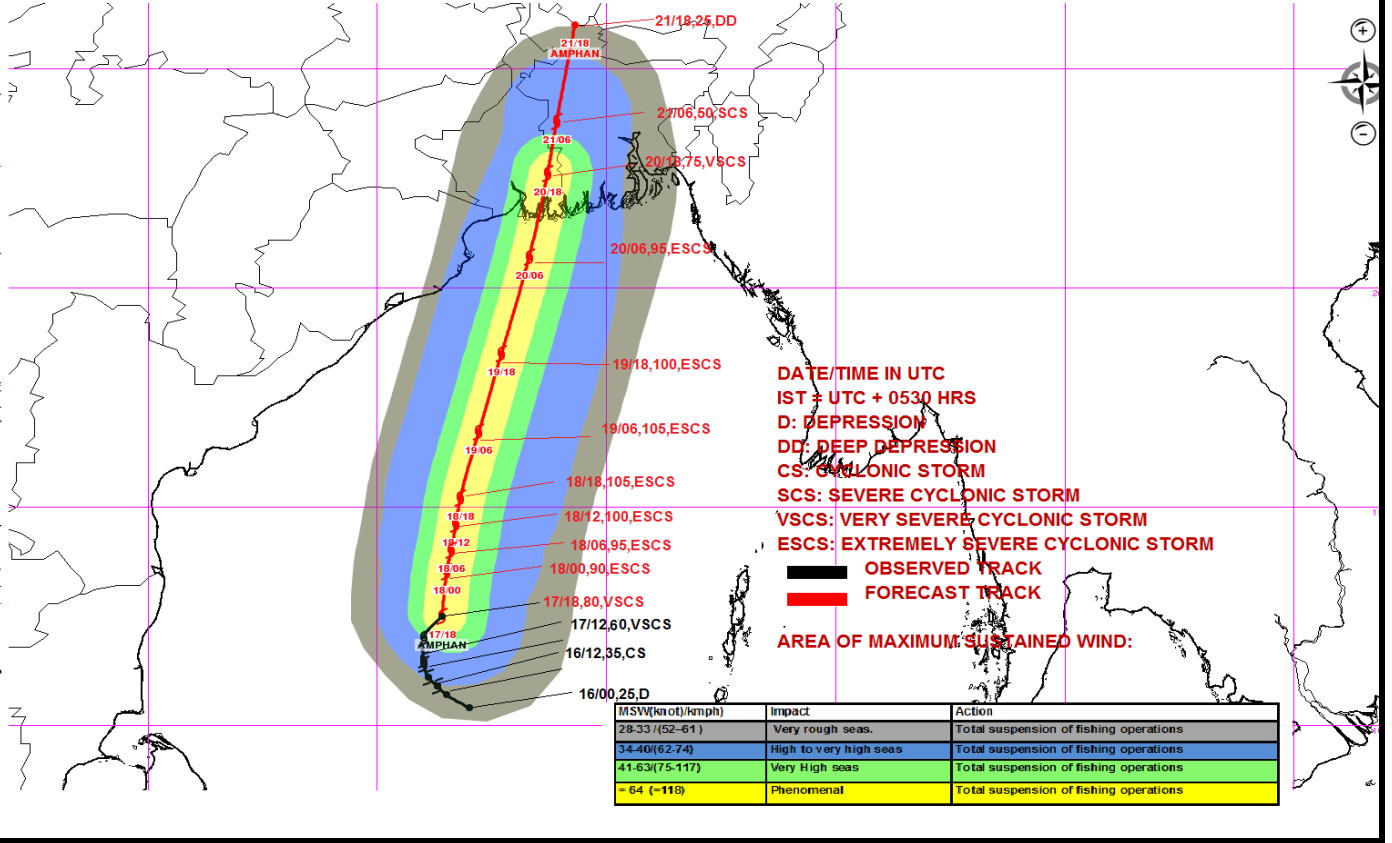
**Spatial rainfall distribution: Isolated: <25%, A few: 26-50%, Many: 51-75%, Most: 76-100%**  
**Rainfall amount (mm): Heavy rain: 64.5 – 115.5, Very heavy rain: 115.6 – 204.4, Extremely heavy rain: 204.5 or more.**

SAT : INSAT-3D IMG 17-05-2020/(1900 to 1926) GMT  
IMG\_TIR1\_TEMP 10.8 um 18-05-2020/(0030 to 0056) IST  
LIC Mercator

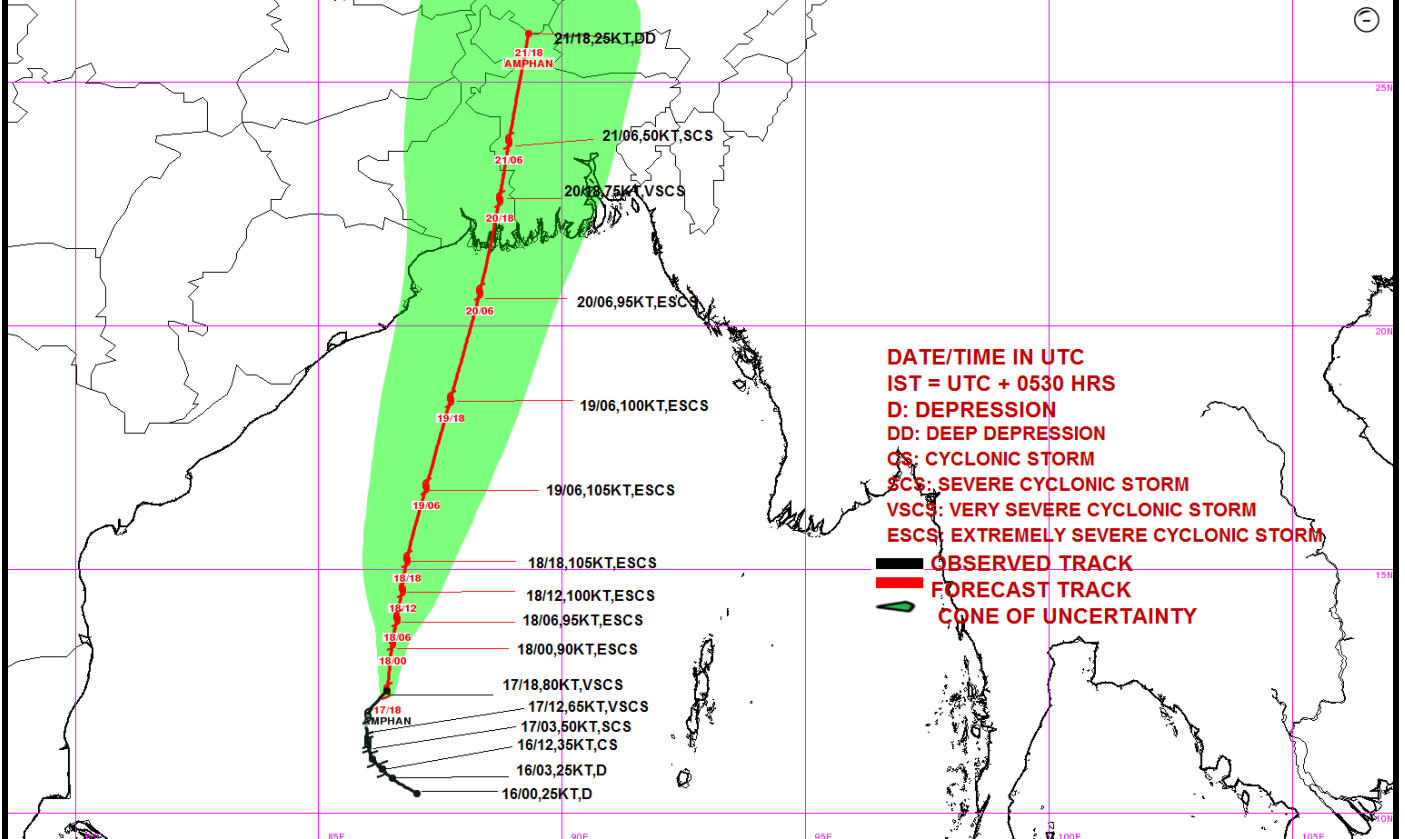


Spatial rainfall distribution: Isolated: <25%, A few: 26-50%, Many: 51-75%, Most: 76-100%  
Rainfall amount (mm): Heavy rain: 64.5 – 115.5, Very heavy rain: 115.6 – 204.4, Extremely heavy rain: 204.5 or more.

**OBSERVED & FORECAST TRACK ALONGWITH QUADRANT WIND DISTRIBUTION OF VERY SEVERE CYCLONIC STORM, AMPHAN OVER CENTRAL PARTS OF SOUTH BAY OF BENGAL BASED ON 1800 UTC OF 17<sup>TH</sup> MAY, 2020**



**OBSERVED & FORECAST TRACK ALONGWITH CONE OF UNCERTAINTY OF VERY SEVERE CYCLONIC STORM, AMPHAN OVER CENTRAL PARTS OF SOUTH BAY OF BENGAL BASED ON 1800 UTC OF 17<sup>TH</sup> MAY, 2020**



**Spatial rainfall distribution: Isolated: <25%, A few: 26-50%, Many: 51-75%, Most: 76-100%**

**Rainfall amount (mm): Heavy rain: 64.5 – 115.5, Very heavy rain: 115.6 – 204.4, Extremely heavy rain: 204.5 or more.**